



EFutures

Who are we?

EFutures is a Sri Lankan company with development centers in Colombo & Stockholm. Our team of experienced professionals can work remotely and seamlessly as part of your organisation. Our skilled team delivers innovative and reliable solutions, serving clients in healthcare, finance, delivery, and more. Committed to long-term relationships, we help organizations streamline operations and achieve business goals through technology.

24 years

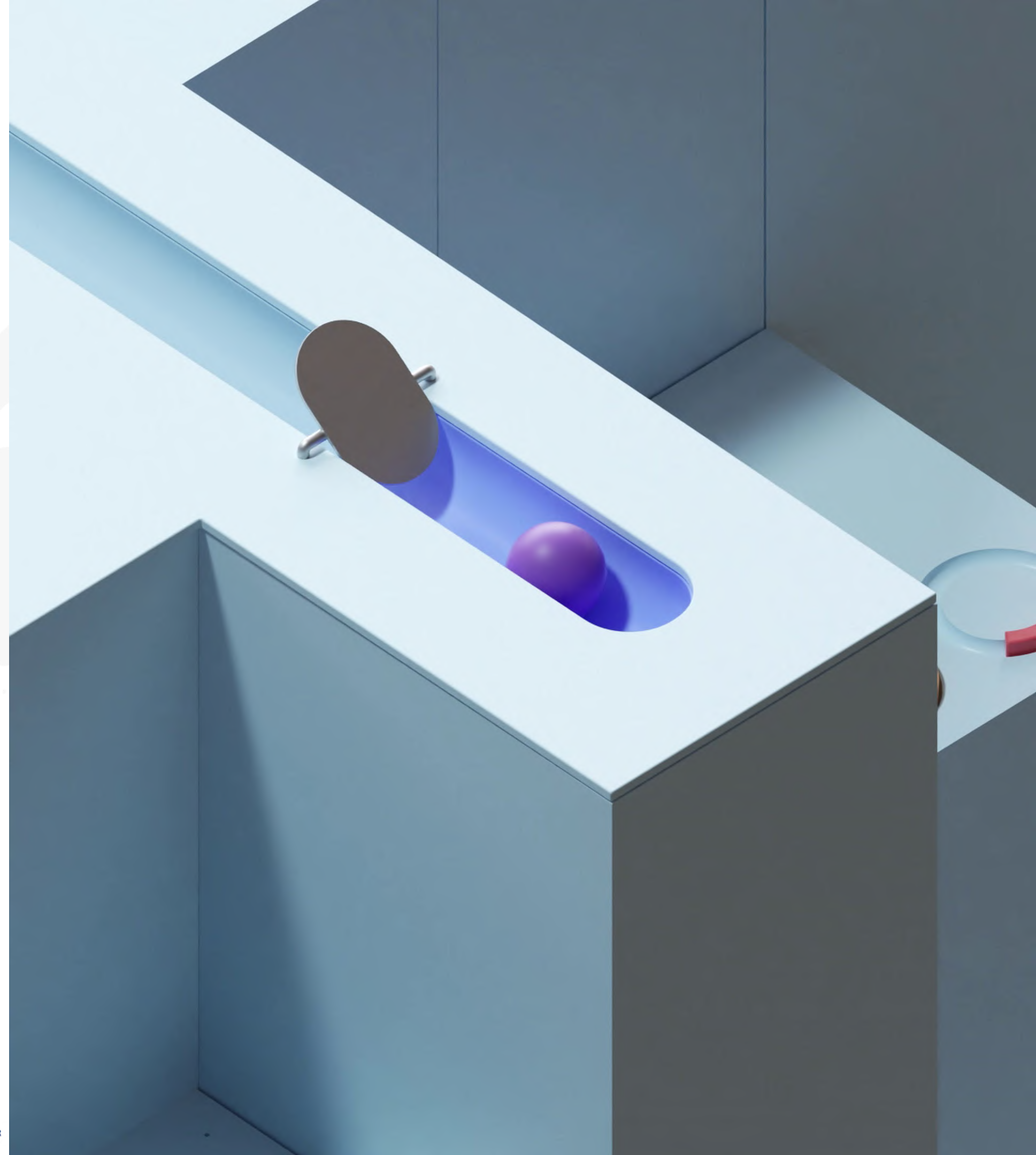
Established in the year 2000

200+ staff

Engineers

150+ projects

Successfully completed



Our Founders

Rishen Fernando CFO

Rishen grew up in a family of entrepreneurs, developing a natural drive for business. He excelled academically and athletically at Eton College, Windsor, United Kingdom, then earned a Bachelor's degree in Economics from Queen Mary University of London and a Master's from City University Business School. Starting his career as an IT Consultant at a British media company, Rishen combined his business skills with his passion for technology. Recognizing the growing demand for IT solutions, he co-founded EFutures with Prashan in 2000.



Prashan Nagendra CEO

Prashan's passion for technology has driven him since childhood. He earned a Business Administration degree from Loyola Marymount University and a Master's in Information Technology from the University of Nottingham. Starting his career as an IT Consultant at KPMG, he later became a Business Development Manager at a Singapore telecom company.

At 27, Prashan co-founded EFutures with Rishen. Starting with a small team, they aimed to connect globally, focusing on projects in the United Kingdom, Sweden and Singapore.

Our Service Offerings

Dedicated Teams

we provide top-tier engineering talent as an extension of your team, ensuring seamless "extended office" solutions for your software development needs.

Software Development Consultation

EFutures specializes in crafting intricate web and enterprise solutions. With a rich legacy spanning 24 years, we bring a wealth of diverse expertise to the table, offering trustworthy insights into what aligns with your needs and what doesn't.

Cloud Support Service

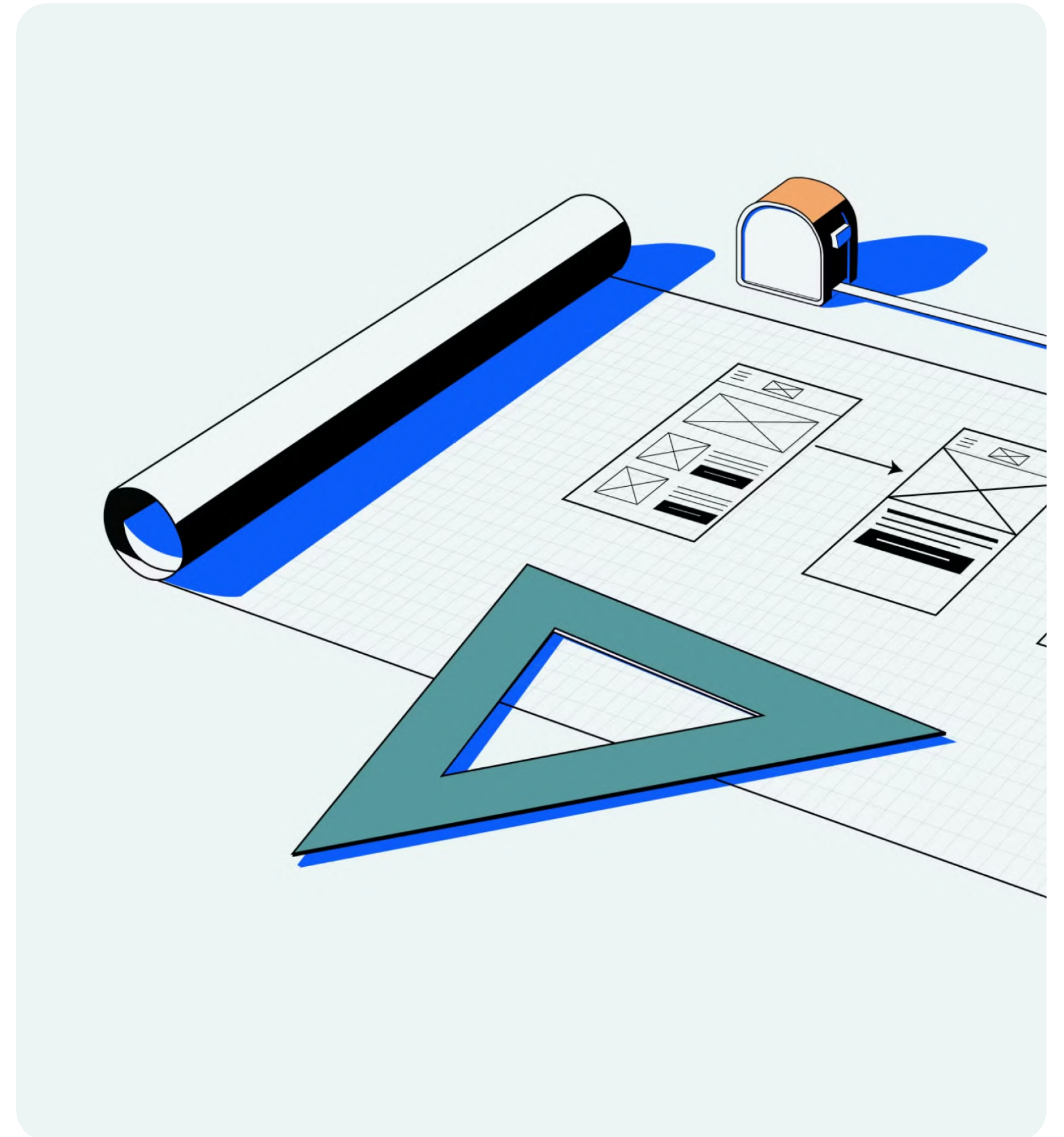
The Cloud Support Team is a dedicated group of professionals specializing in providing comprehensive support and management services for cloud-based infrastructures.

This team is crucial for organizations leveraging cloud platforms such as AWS, Azure, or others.



Project Portfolio

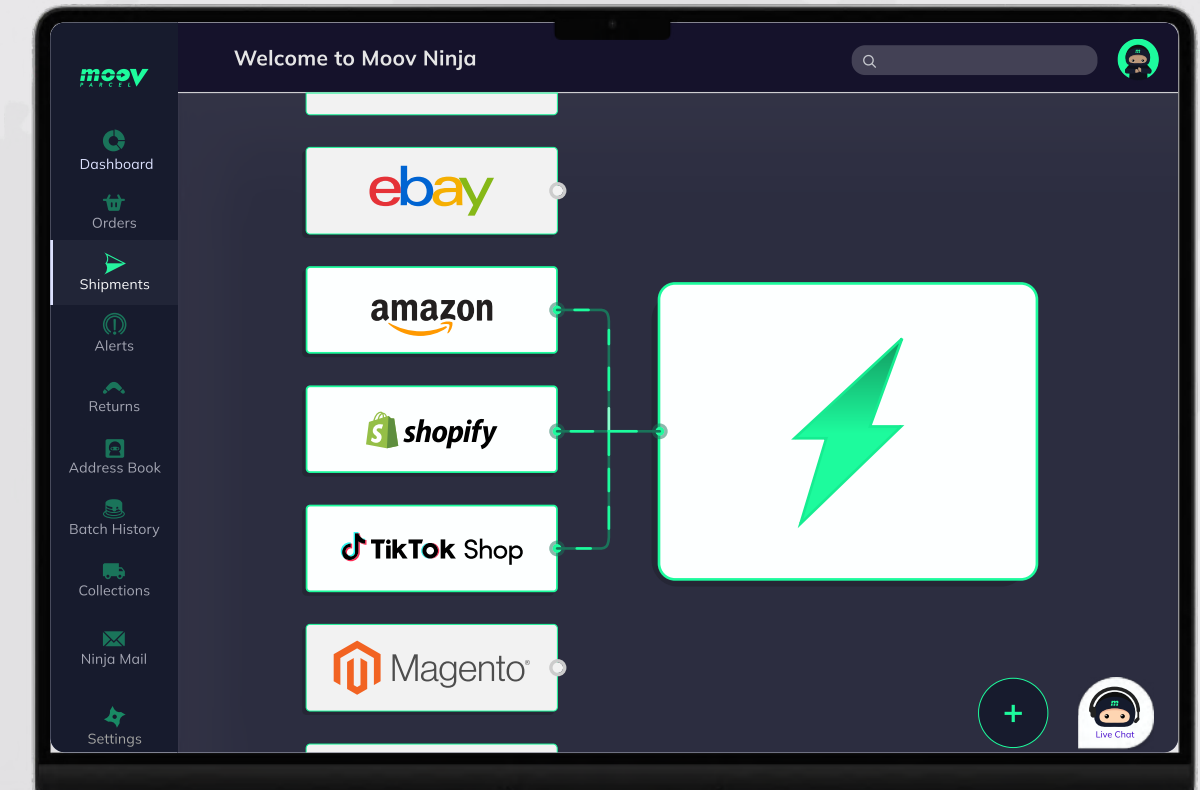
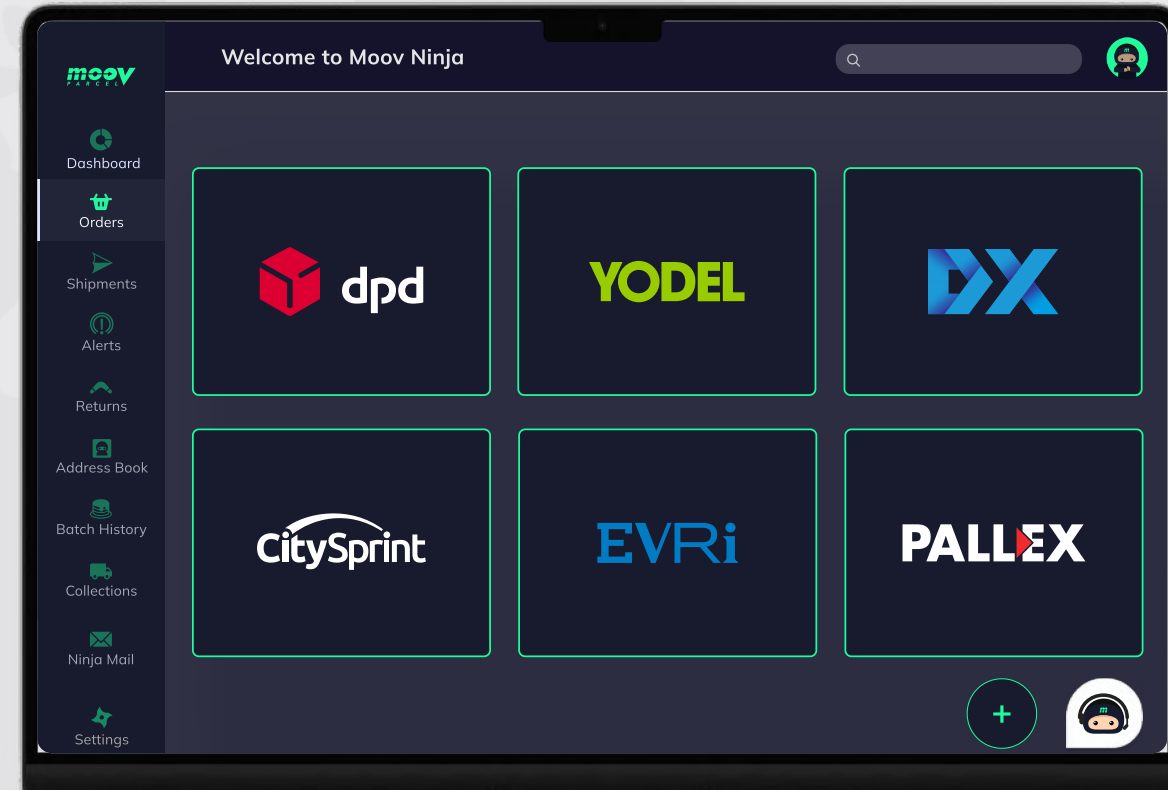
Logistics & Delivery Systems





Moov Parcel is a B2B cloud-based courier management system that allows you to quickly and easily connect to all your eCommerce channels and marketplaces whilst dispatching your orders seamlessly by automated shipping rules.

Date of Partnership - 2022 to present



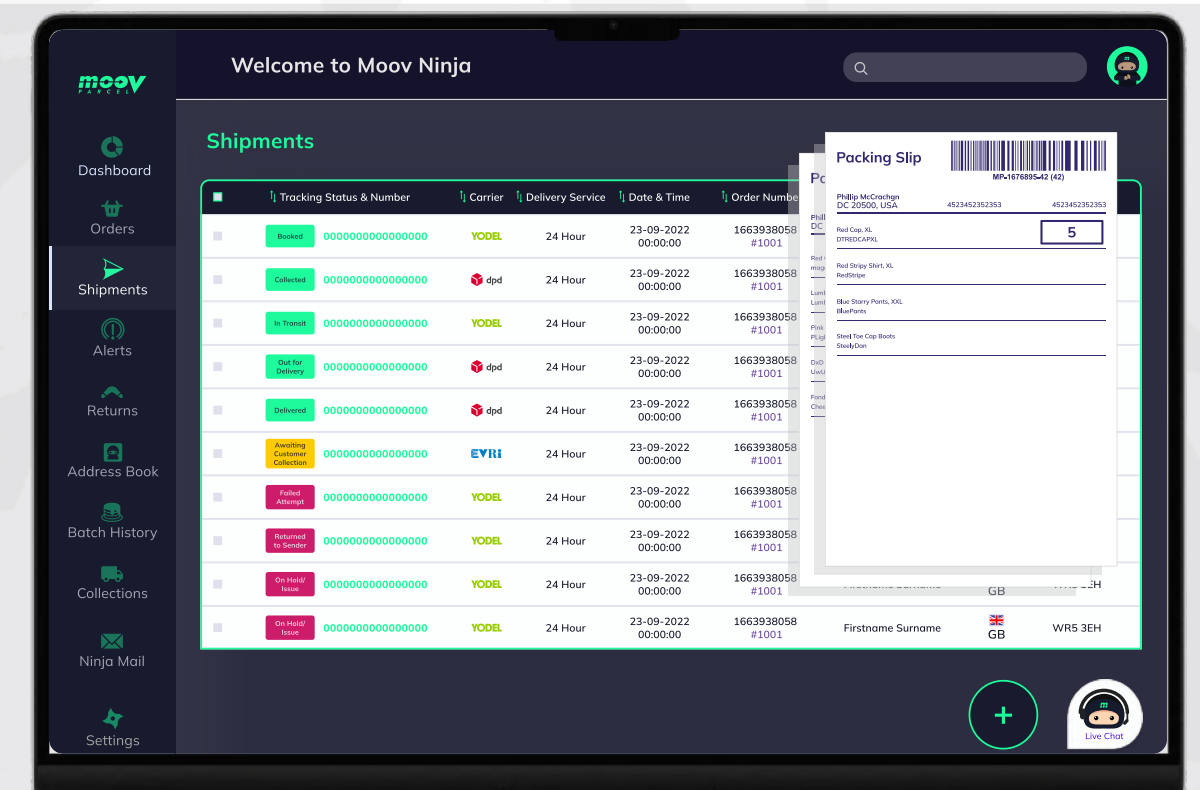
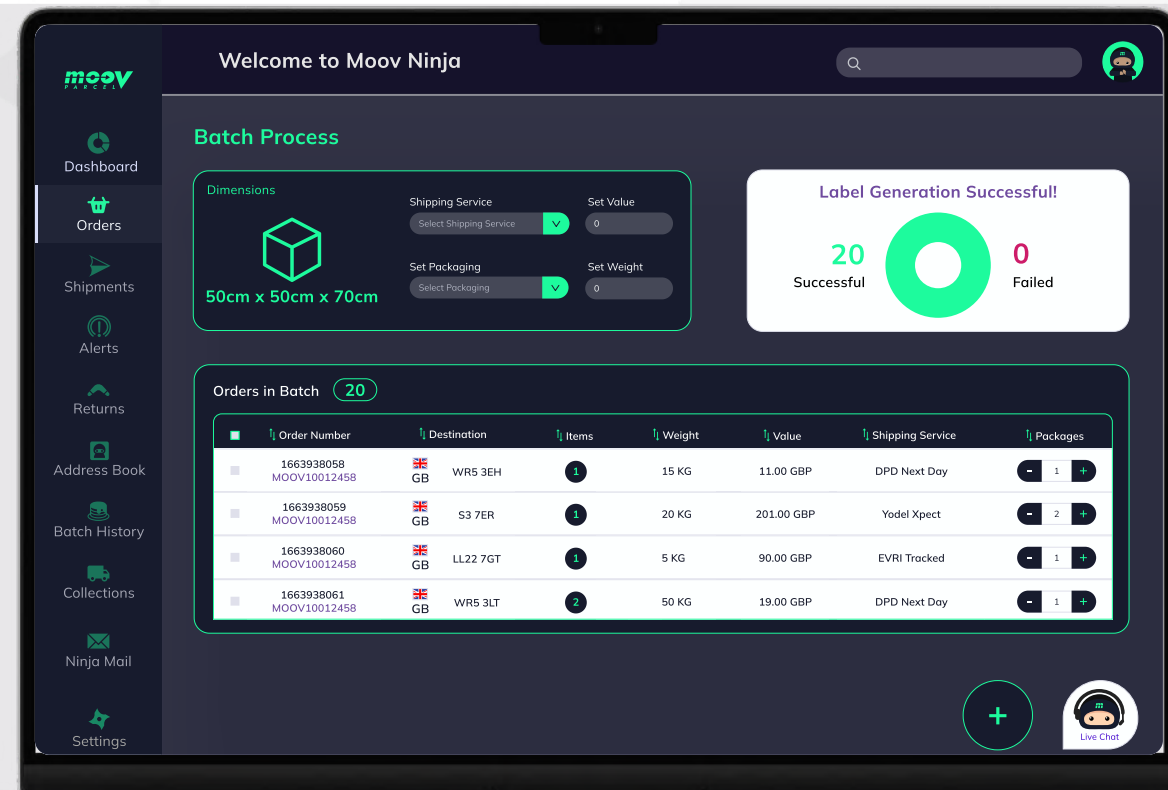
Project Info

EFutures architected, implemented, and continues to maintain and enhance all system components while also managing the system's hosting.

Team Composition



1 Node & 1 Fullstack React.js Engineers



powered by aws



Ship Oci is a global leader in third-party logistical solutions with its headquarters based in Miami, Florida. catering to various modes of transportation such as Refrigerated Cargo, Cross Docking, Ocean Freight, Trucking, Rail, Air, Inventory Tracking and specializes in providing comprehensive supply chain management solutions on a global scale.

EFutures custom-built "RapidLink", ShipOCI's revolutionary supply chain software from scratch. Unlike other systems, RapidLink is designed around predictive decision-making, offering customers unparalleled access to their supply chain through a single platform that provides live data, photos, and instant status updates.

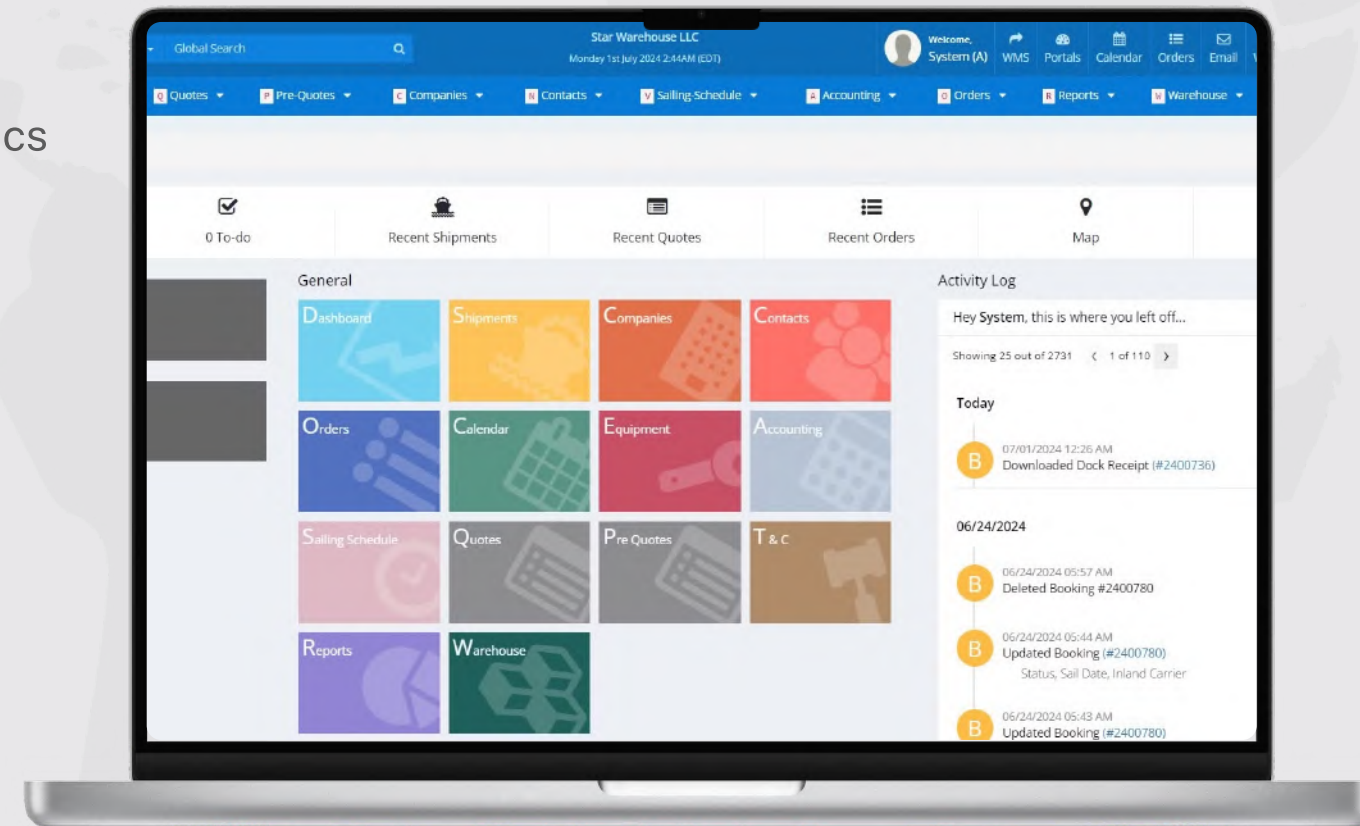


Project Info

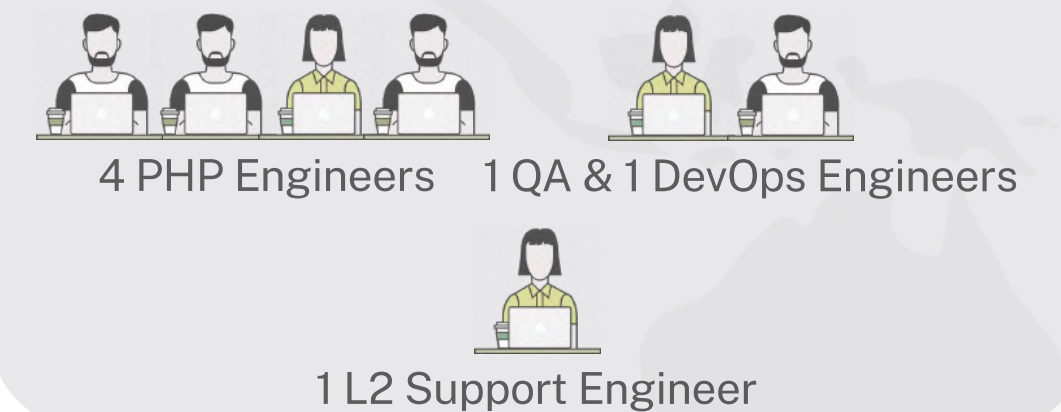
EFutures developed the entire 3PL logistics system for ShipOci, including:

- Warehouse management module
- Customer portal
- Accounting portal
- Sales portal
- HRM system

Date of Partnership - 2009 to present

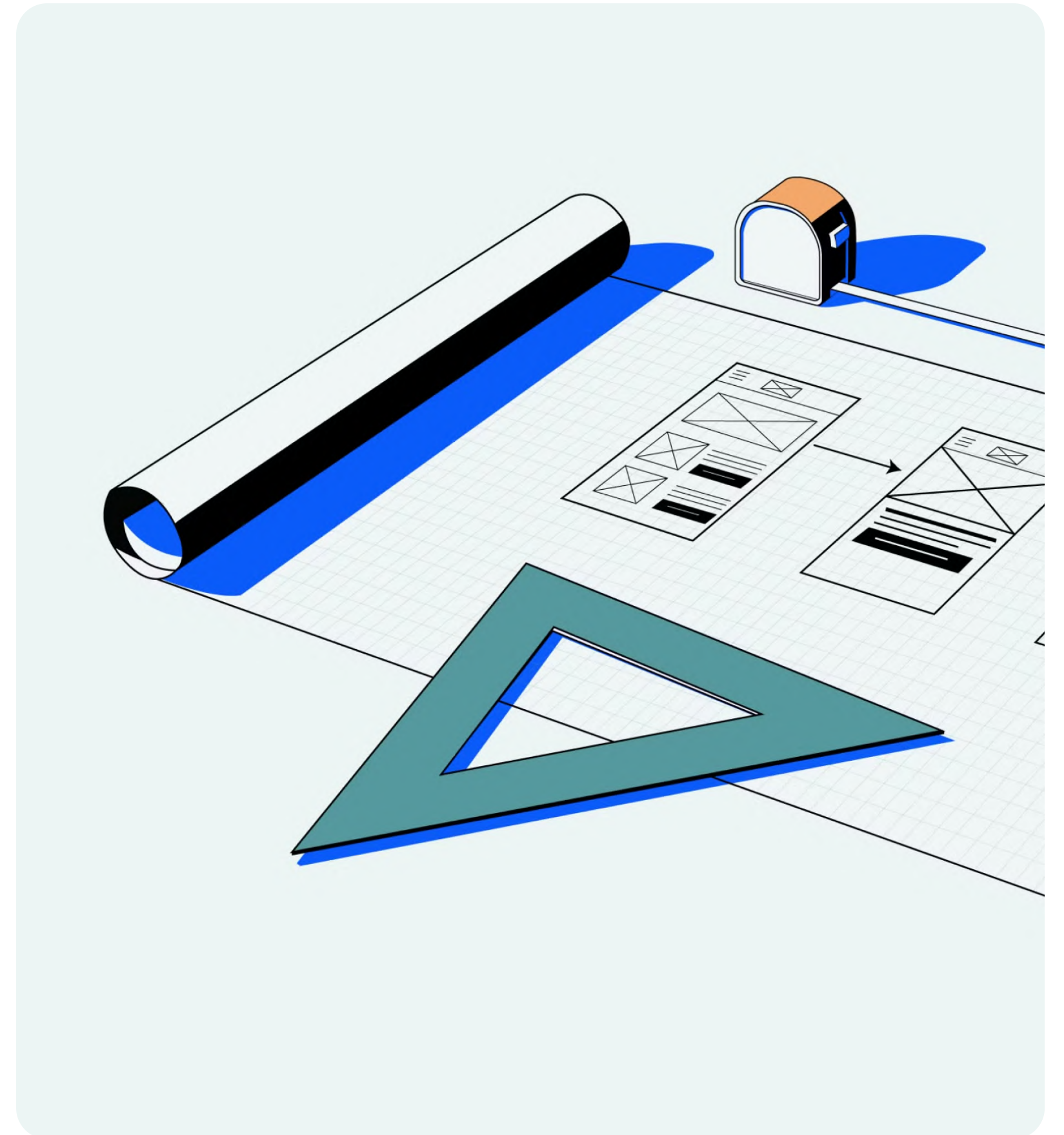


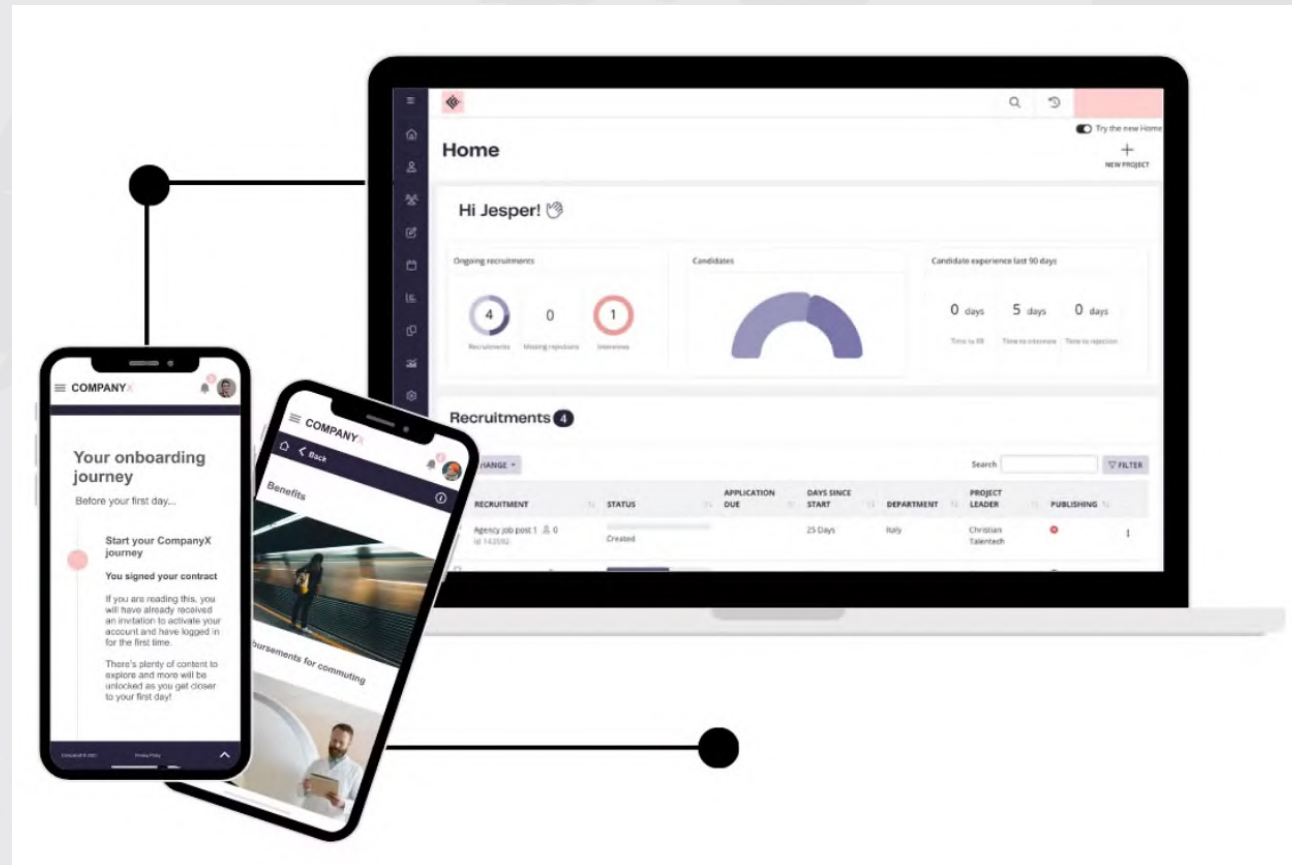
Team Composition



Project Portfolio

Health & Wellness



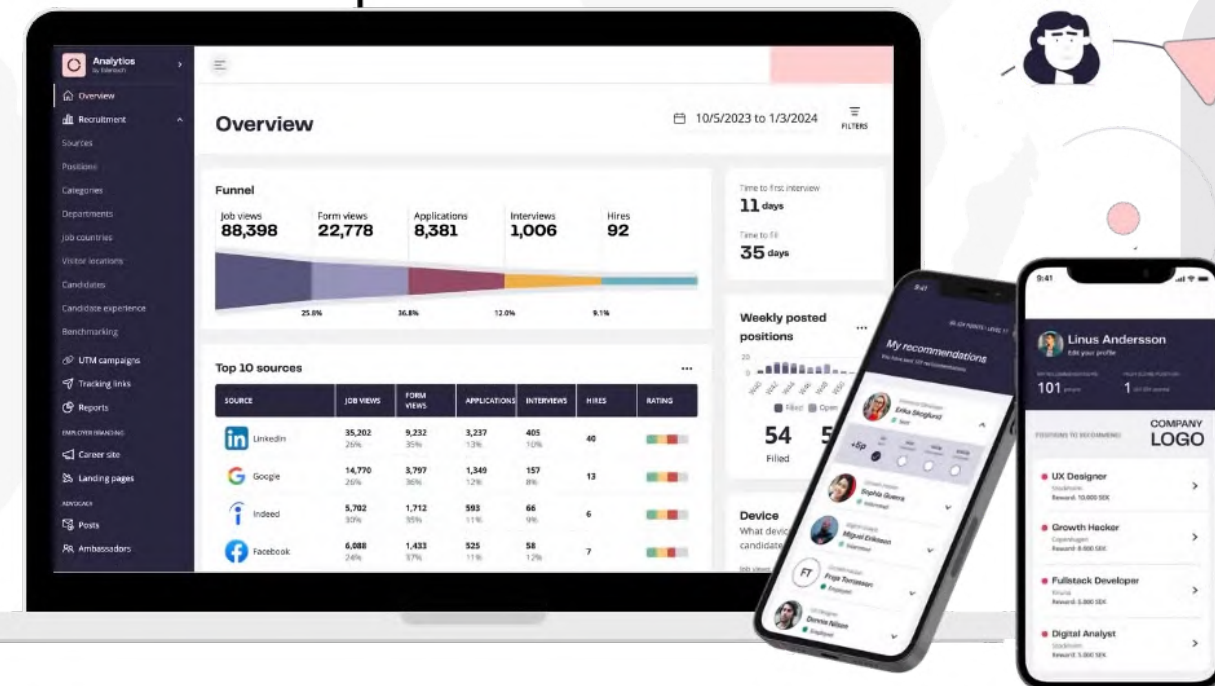
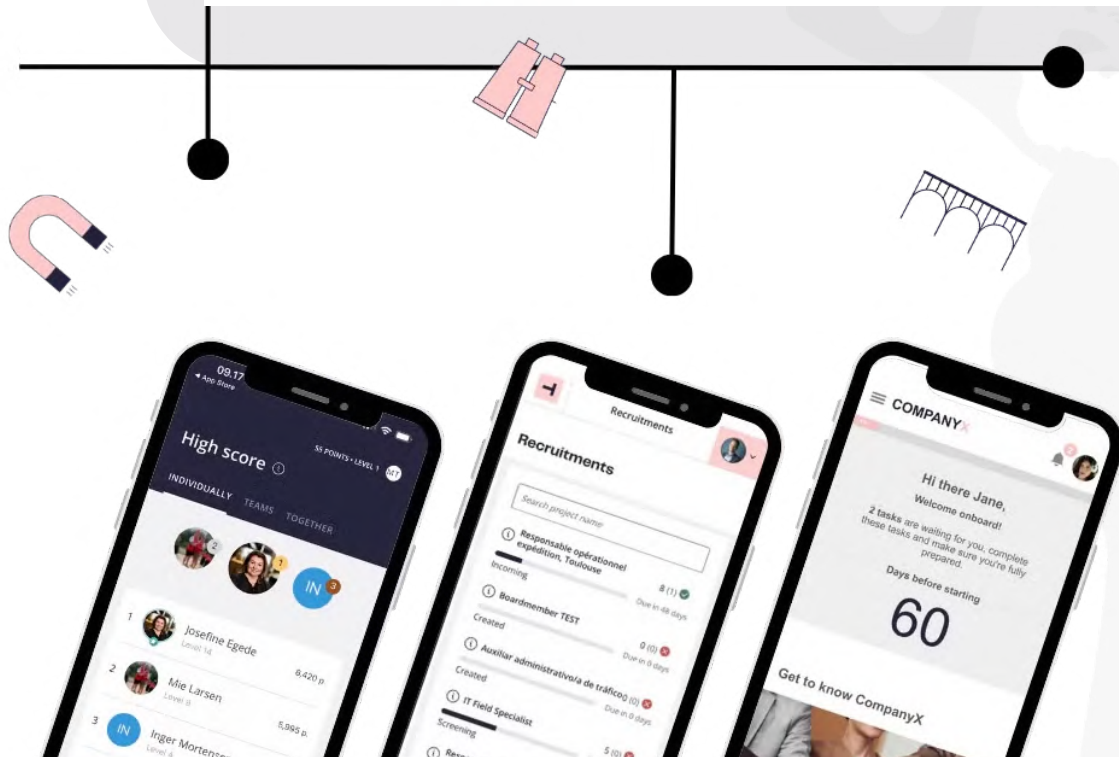


Weekli, empowers organizations to cultivate a proactive workplace environment by conducting regular pulse checks. Weekli enables employees to express their thoughts anonymously, providing valuable insights that facilitate the ongoing development of individuals and foster engagement. By relying on factual data rather than relying on subjective intuition, organizations can make informed decisions to enhance their workforce,

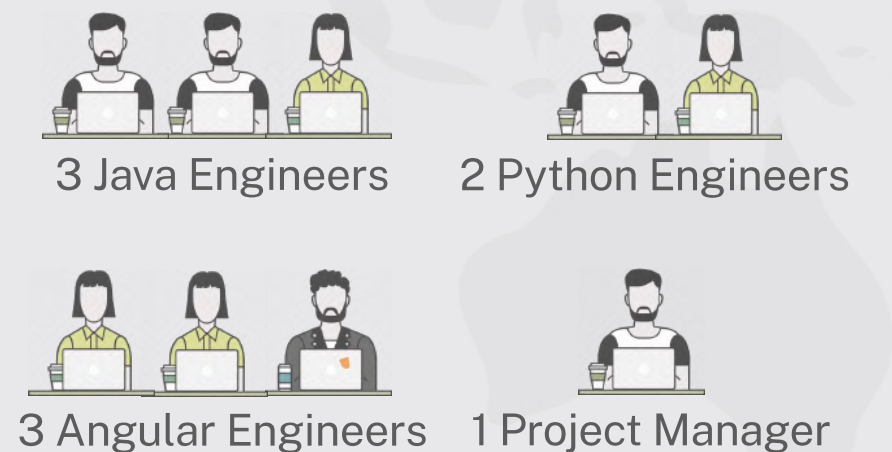
Project Info

EFutures designed, developed, and deployed the entire ecosystem from the ground up. We utilized microservice architecture for scalability, data lakes for big data processing, and Luigi for batch processing.

Date of Partnership - 2018 to 2021



Team Composition





Walkingspree is a leading digital activity tracking solution, inspiring high employee engagement through their mobile app and website platform. Employees can connect wearables and smartphones to track steps, join walking challenges, and boost physical activity.

24/7

Developer & Cloud Support

30%

Cost Reduction Achieved



Walkingspree has received a clean SOC 2 Type 1 attestation report. This rigorous, independent assessment of our internal security controls serves as validation of our dedication and adherence to the highest standards for security.

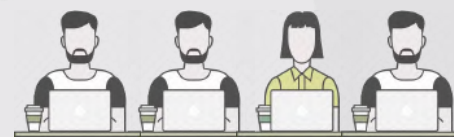


Project Info

EFutures provides a dedicated team of engineers providing 24/7 developer support, system enhancements, and technical guidance. The project also includes a dedicated DevOps engineer and round-the-clock cloud support for monitoring and maintenance.

Date of Partnership - 2017 to present

Team Composition



4 PHP Engineers



1 DevOps Engineer

powered by 



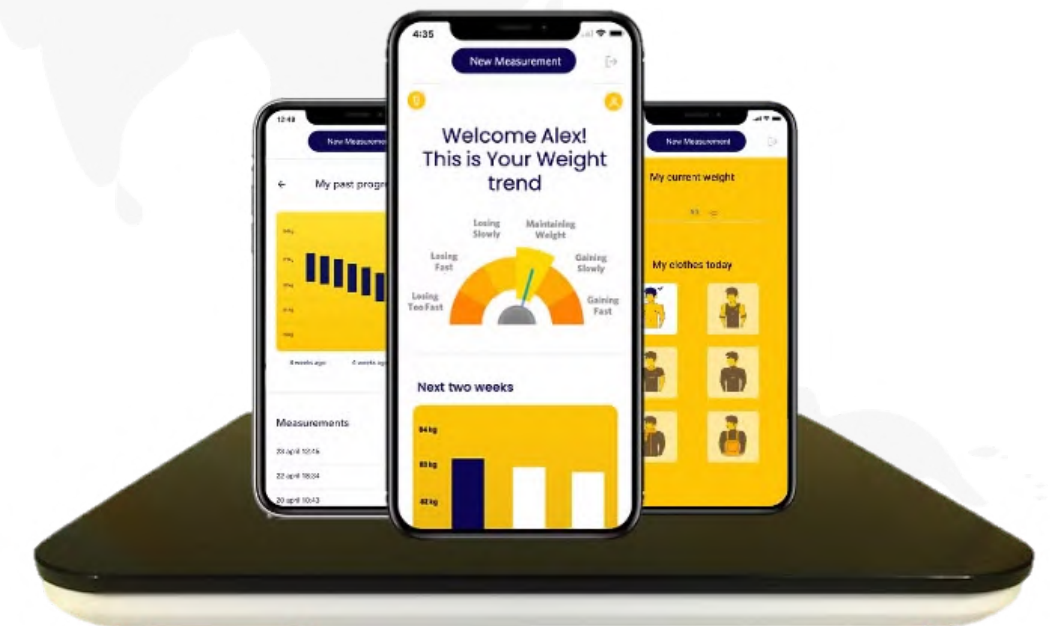
EW2Health BV is a pioneer in seamless health technology solutions specializing in user-centric health promotion and data-driven support for healthcare professionals. EW2Health leverages proprietary, science-backed algorithms for behavior-based predictive analytics, transforming user actions into insights that drive both individual motivation and health professional support.

EFutures is the technology partner to EW2Health and has built all their applications.

Date of Partnership - 2016 to present



Clients / patients download the Sinque app. Users then join program and now has access to content and remote monitoring support from their health professional.

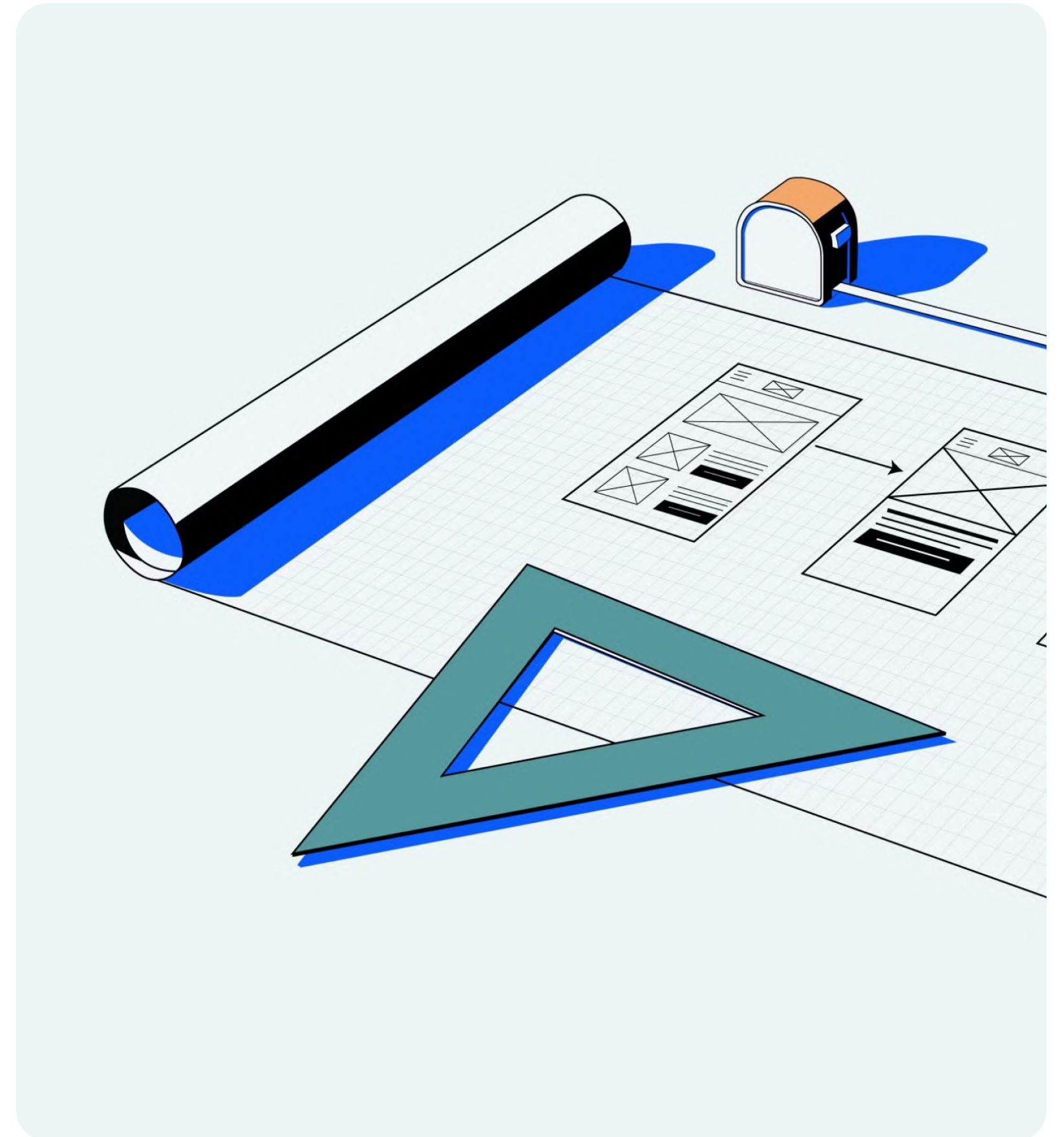


Users will receive their scales specially designed by Sinque which connects to the application and starts collecting data. High traffic scales are also available to corporate and professional users.



Project Portfolio

Process Management Systems





Tagd is an AI-driven platform that revolutionizes contract management by automating data capture, extraction, and organization. It tackles common issues such as incomplete data entry and complex implementation. Users can easily upload contracts or send them via email, while machine learning algorithms extract key information automatically.

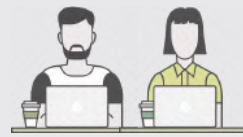
Date of Partnership - 2021 to Present



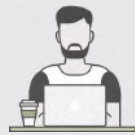
Project Info

Using Java and React.js EFutures engineering team developed platform features such as customizable views, automated reminders, task assignments, and audit logs. These enhancements ensure that users see only relevant data, integrate seamlessly with existing workflows, and never overlook important contract details. By centralizing and automating contract processes, we save users time, reduce risks, and enhance business efficiency.

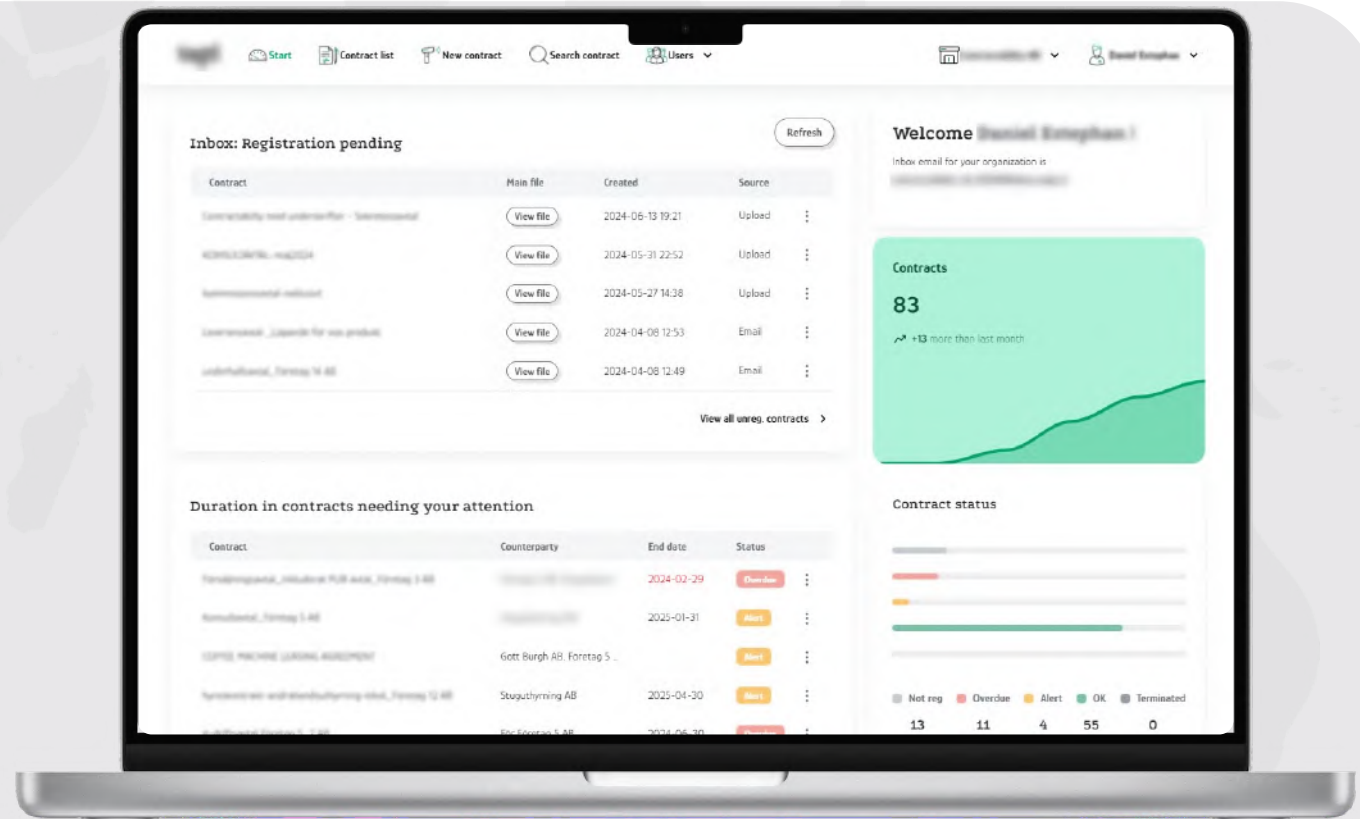
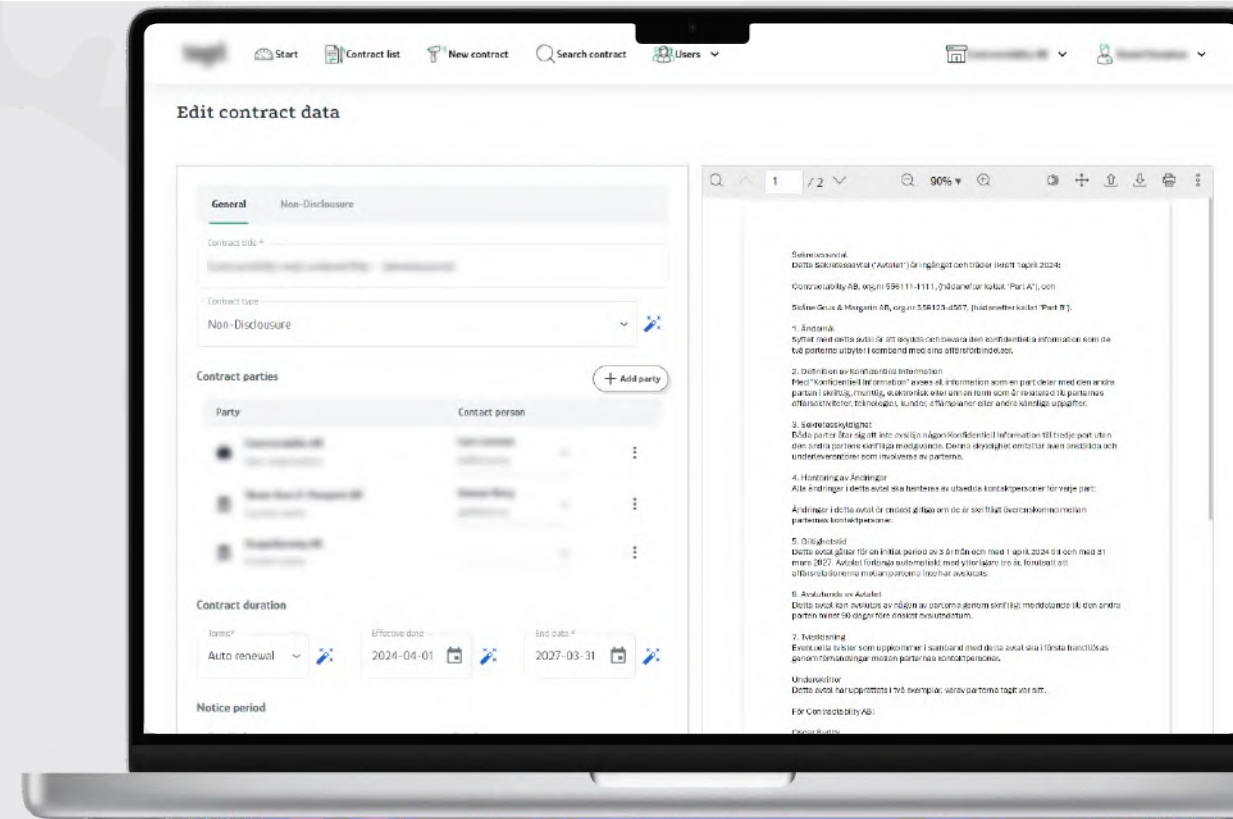
Team Composition



2 Java Engineers

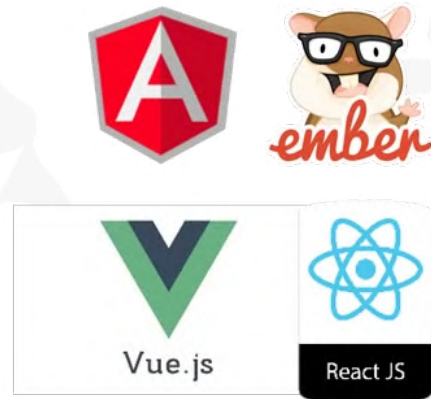


1 React.js Engineer



Technologies

Front-end



Back-end



User Interface



Mobile



Thank you!

Contact Information,

Kamalraj Thiagarajen

Chief Operations Officer

kamalraj@efuturesworld.com

+94 77 293 5796

www.efuturesworld.com

